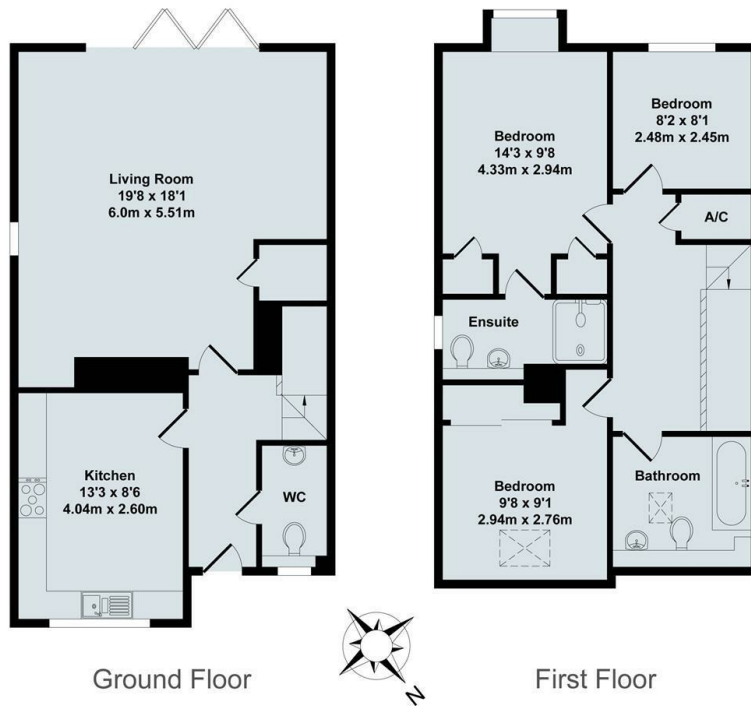




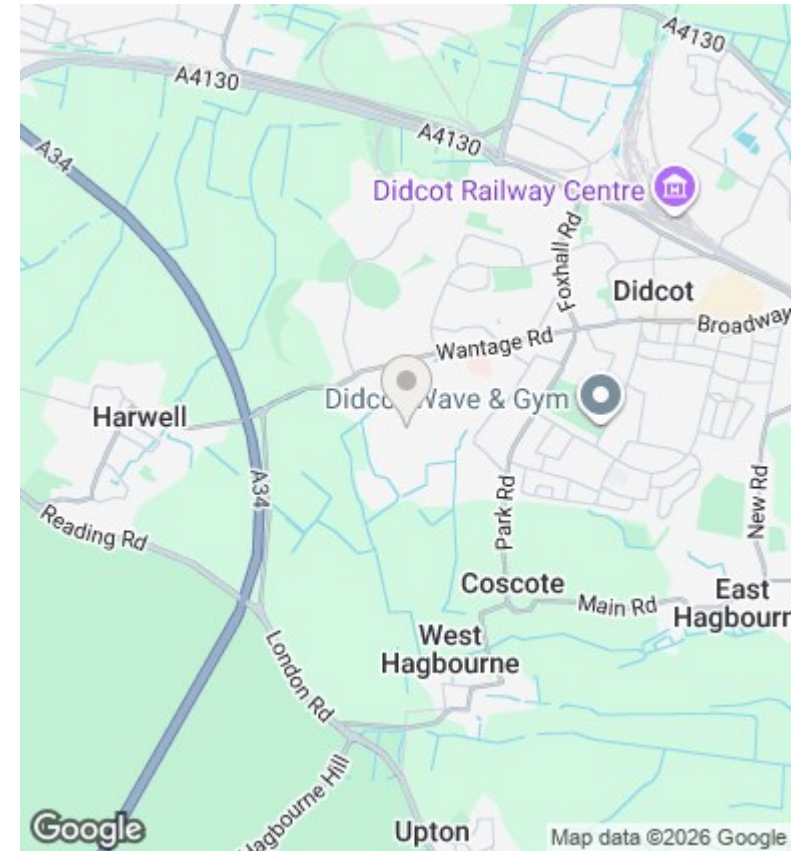
26 Aster Close, Didcot, OX11 6FR

£1,900 PCM - 29th June 2026.

- Newly constructed three-bedroom Semi detached house
- Fully fitted kitchen with integrated appliances
- En-suite to master bedroom
- Air source heat pump
- EPC Rating B,
- Council Tax Band to be confirmed as new build.



Total Approx. Floor Area 1137 Sq.Ft. (105.60 Sq.M.)
 All items illustrated on this plan are included in the "Total Approx Floor Area"



Directions

Viewings

Viewings by arrangement only. Call 01235 514267 to make an appointment.

Council Tax Band

EPC Rating:
 B

Energy Efficiency Rating		Current	Potential
<i>Very energy efficient - lower running costs</i>			
(92 plus)	A		
(81-91)	B	82	90
(69-80)	C		
(55-68)	D		
(39-54)	E		
(21-38)	F		
(1-20)	G		
<i>Not energy efficient - higher running costs</i>			
England & Wales		EU Directive 2002/91/EC	